



## GOKIXX 652

Wireless Neckband

Get ready for MORE, for a LIFE of WOW with your all new GOKIXX 652. We strongly recommend you go through this manual entirely before beginning to use the product, as it contains important technical information to ensure a seamless audio experience. It can also be referred to in times of difficulty.

### PACKAGE CONTENTS

- 1 x GOKIXX 652
- 1 x Type C Charging Cable
- 2 x Additional Ear Muffs
- 1 x Warranty Card
- 1 x Manual

### CHARGING

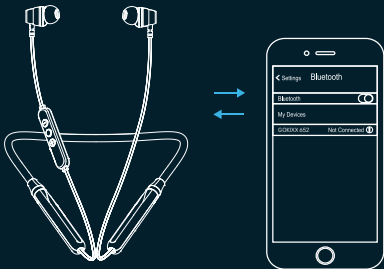
- Earphones are partially charged. Please ensure you fully charge them before you use them for the first time.
- Plug the Type C cable into the charging port of any USB charging adapter or active computer USB port.
- Charging will start automatically, and the LED indicator will turn red.
- The earphones are fully charged when the LED indicator turns blue.

Note: Charge the earphones at least once every month when they are not in use for a long time.

## PAIRING DEVICE

Pairing steps for mobile :

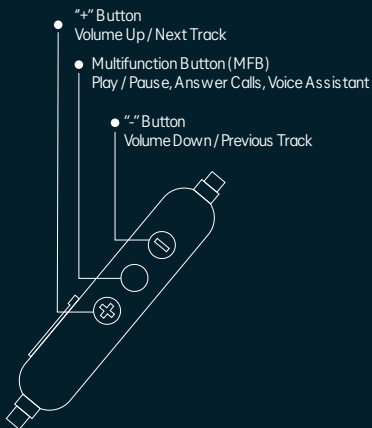
- Turn the earphones on by holding the MFB for 4 seconds. Then the red and blue light indicator will start blinking. You have entered into pairing mode.
- Open bluetooth and keep the neckband close to your mobile.
- Find and select the Bluetooth name GOKIXX 652 in your bluetooth devices list.
- When GOKIXX 652 is connected the blue light indicator will start blinking every 5 seconds.
- GOKIXX 652 will automatically be connected to the paired device, every time the device is switched on in the future.



## HOW TO USE

Power On	Press and hold the MFB for 4 sec
Power Off	Press and hold the MFB for 5 sec
Play	Short press the MFB once to play
Pause	Short press the MFB once to pause
Volume Up	Press "+" button in steps to increase volume
Volume Down	Press "-" button in steps to decrease volume
Next Track	Long press and hold the "+" button for 2 sec
Previous Track	Long press and hold the "-" button for 2 sec
Answer Calls	Single press the MFB to attend an incoming call
Hang Up Calls	Single press the MFB to end an ongoing call
Reject Calls	Long press the MFB for 2 sec to reject an incoming call
Redial	Double press the MFB to redial the last called number
Voice Assistant	Long press the MFB for 2 sec to activate Voice Assistant
Game Mode On/Off	Triple press the MFB to switch to Low Latency mode

## FUNCTION CONTROLS



## SPECIFICATION

Model	GOKIXX 652
Driver size	10mm
Frequency Range	20Hz-20kHz
Sensitivity	115dB±5dB
ENC	Environment Noise Cancellation
Battery Capacity	300mAh
Music Playtime	60 Hours
Charging Port	Type C
Input Voltage	5VDC, 1A
Fast Charge	10 hours playtime with 10 mins charge
Full Charge	1 Hour
Bluetooth	V5.2
Transmission Dist.	10m
Water Resistance	IPX5

## SAFETY INSTRUCTIONS

- 1 Please read, follow and keep these instructions.  
Heed all warnings on the product and in the instructions for use.
- 2 Stop using this product immediately if it causes discomfort or pain. When using this product, it is recommended that you limit the volume to help avoid causing harm to your ears and danger resulting from being unable to hear what is going on around you.
- 3 Keep the device out of extreme heat and humidity.  
Do not use the device near water, such as sinks, bathtubs, swimming pools, washing machines, tubs of water, etc.
- 4 Observe all signs and instructions that require an electrical device or radio product to be switched off in designated areas, such as petrol/refueling stations, hospitals, blasting areas, potentially explosive atmospheres, and aircraft.
- 5 Using earphones while driving can distract you and increase the likelihood of an accident. If driving conditions demand it (such as bad weather, high traffic density, presence of children in the car, difficult road conditions), pull off the road and park before making or answering calls.
- 6 Battery life may differ depending on personal habits.
- 7 Please do not rotate the headset when the head band has been set/pushed to the lowest position.
- 8 This appliance should be used in moderate climates.

## WARNING

- To prevent potential hearing damage, do not listen to high volume levels for long periods.
- Do not turn the volume up too high; doctors warn against prolonged exposure to high volumes.
- Stop using the product or lower the volume if you feel your ears ringing. Prolonged listening at high volumes could lead to hearing damage.

Life's too short for "ok". Too short to have stuff in our lives that's "ok, I guess".  
"But-I'm-almost-home!" battery life. "But-it-only-fell-off-the-table" build quality. "Has-someone-stolen-the-bass?" sound quality.  
We say NO to "ok". In 2021, we set out to make stuff that's better in little ways that make a big difference.  
Stuff for people who expect more. Who want the songs to keep playing until they're home. Who are on a mission to stay up all night. Who want to know they'll feel great and look awesome, every day.  
For people who want every day to be a 'WoW' day.